

Installation Instruction

1. Item Name: Gutter Ladder

2. Product Material Number: YK-FTHS-PATI-1000

Installation Time: 30 minutes

3. List:

Person Needed: 2

1.1 LIST OF COMPONENTS

NO.	QTY	NAME	REMARKS
1)	1	Ladder Upper Section	
2)	1	Ladder Lower Section	
3)	1	Ladder Gutter Bracket	
4)	2	Ladder Side Connectors	
5)	1	Magnetic Stands	
6)	3	Round Rubber-coated Strong Magnet	
7)	10	Lock Nut	M8
8)	17	Flat Washer	∅ 8
9)	5	Spring Washer	∅ 8
10)	3	Socket Head Cap Screw	M8*12
11)	2	Socket Head Cap Screw	M8*20
12)	10	Socket Head Cap Screw	M8*40

May lead to injury to installer, kindly take care.

WARNING



Kindly do installation process as mentioned in this manual.

Watch out head and hand during installation.

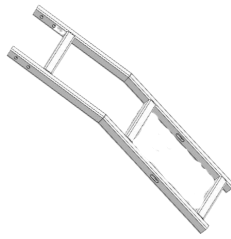
CAUTION



2.1 ITEM PICTURES



Ladder Upper Section



Ladder Lower Section



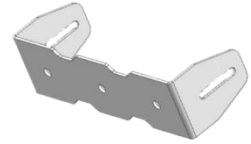
Ladder Gutter Bracket



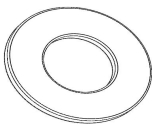
Ladder Side Connectors



**Round Rubber-coated
Strong Magnet**



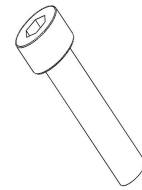
Magnetic Stands



Flat Washer



Spring Washer



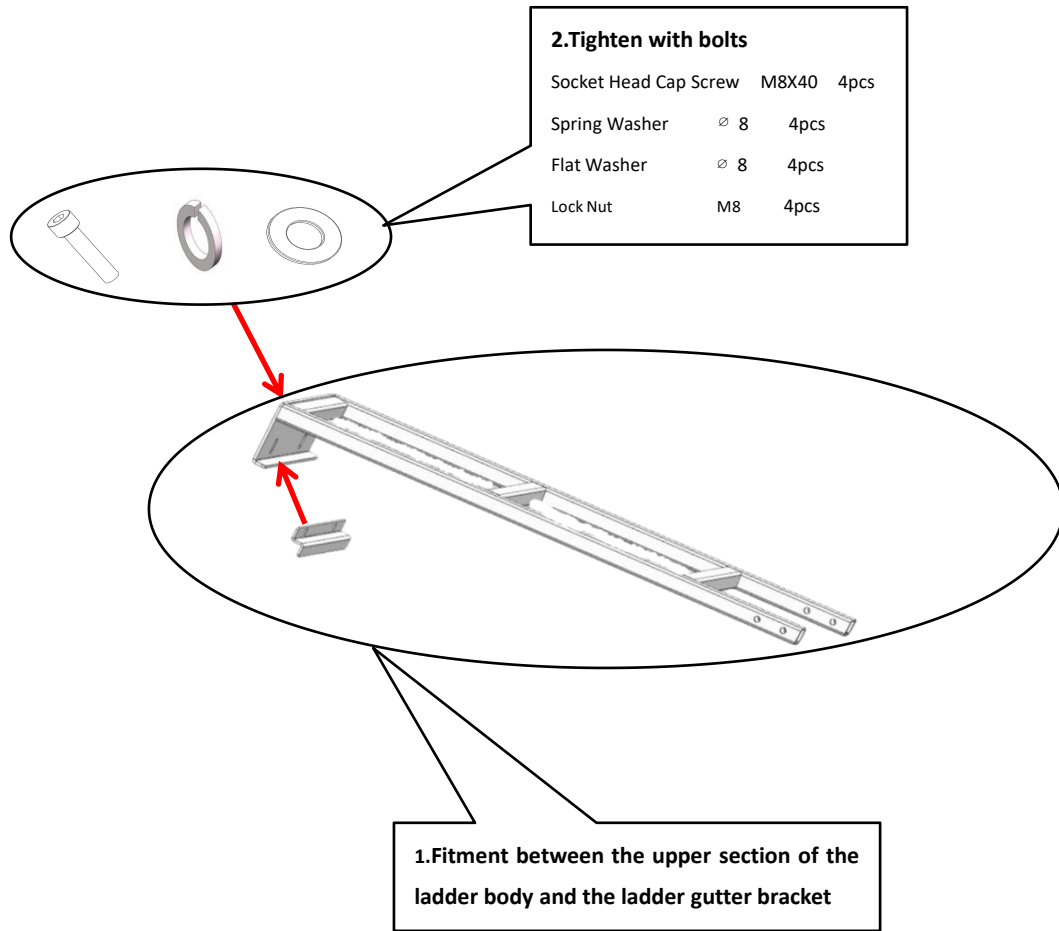
Socket Head Cap Screw



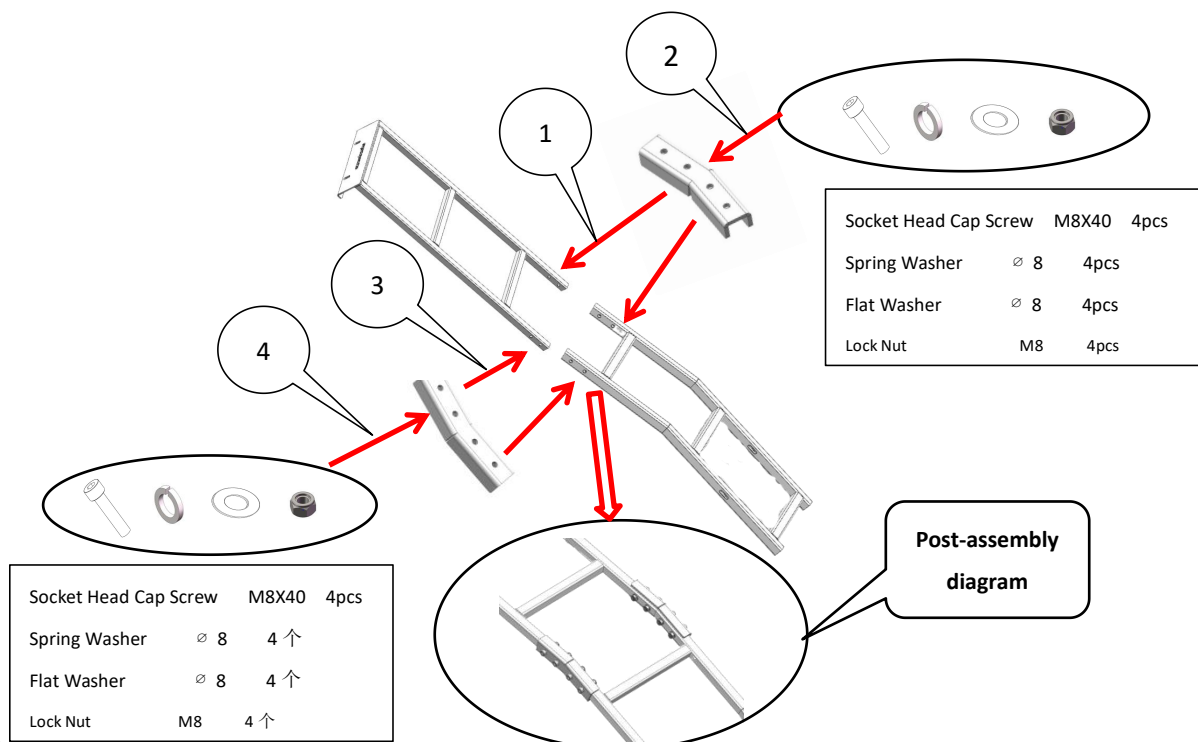
Lock Nut

Parts Installation Diagram

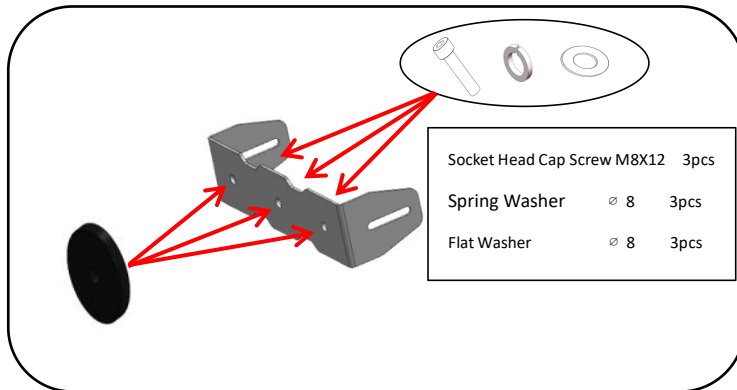
3.1 Diagram of the connection between the upper section of the ladder body and the ladder gutter bracket



3.2 Diagram of the connection between the upper section and the lower section of the ladder body



3.3 Diagram of the assembly of the round rubber-coated strong magnet and the strong magnet bracket



Assembly Diagram

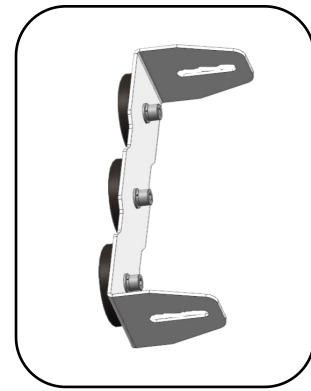


Diagram of completed assembly

3.4 Strong magnet bracket connection with the ladder body

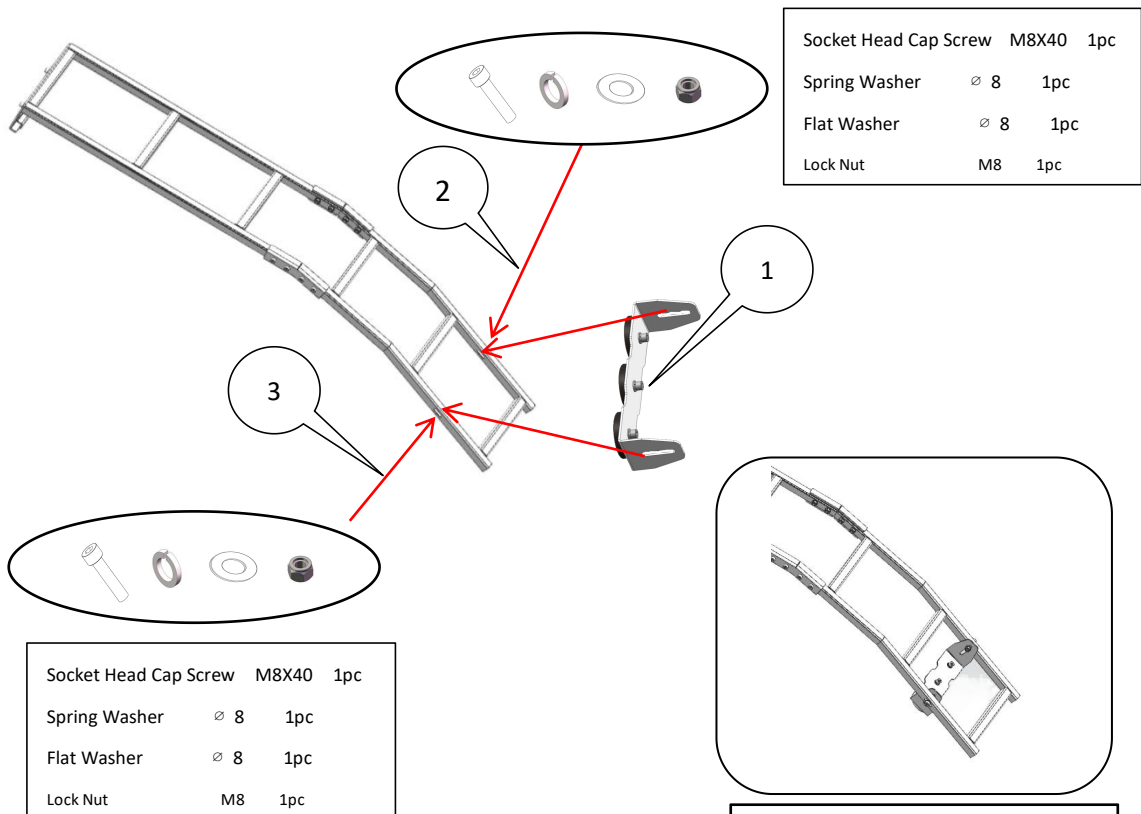
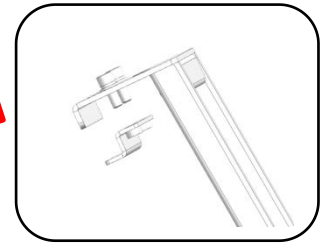
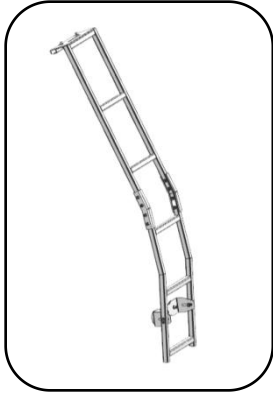


Diagram of the strong magnet connection with the ladder body

3.5 Ladder mounting on vehicle



Assembly Completed